

**PI 3 Kinase p85 alpha Antibody**  
**Rabbit mAb**  
**Catalog # AP90394****Specification**

---

**PI 3 Kinase p85 alpha Antibody - Product Information**

Application	WB
Primary Accession	<a href="#">P27986</a>
Reactivity	Rat
Clonality	Monoclonal
<b>Other Names</b>	
GRB1; P85A; PI3-kinase p85-alpha; PI3K; PI3K p85-alpha; ptdIns-3-kinase p85-alpha;	
Isotype	Rabbit IgG
Host	Rabbit
Calculated MW	83598 Da

**PI 3 Kinase p85 alpha Antibody - Additional Information**

Dilution	WB~~1:1000
Purification	Affinity-chromatography
Immunogen	A synthesized peptide derived from human PI 3 Kinase p85 alpha
Description	Binds to activated (phosphorylated) protein-Tyr kinases, through its SH2 domain, and acts as an adapter, mediating the association of the p110 catalytic unit to the plasma membrane. Necessary for the insulin-stimulated increase in glucose uptake and glycogen synthesis in insulin-sensitive tissues. Plays an important role in signaling in response to FGFR1, FGFR2, FGFR3, FGFR4, KITLG/SCF, KIT, PDGFRA and PDGFRB. Likewise, plays a role in ITGB2 signaling.
Storage Condition and Buffer	Rabbit IgG in phosphate buffered saline , pH 7.4, 150mM NaCl, 0.02% sodium azide and 50% glycerol. Store at +4°C short term. Store at -20°C long term. Avoid freeze / thaw cycle.

**PI 3 Kinase p85 alpha Antibody - Protein Information****Name** PIK3R1**Synonyms** GRB1**Function**

Binds to activated (phosphorylated) protein-Tyr kinases, through its SH2 domain, and acts as an

adapter, mediating the association of the p110 catalytic unit to the plasma membrane. Necessary for the insulin-stimulated increase in glucose uptake and glycogen synthesis in insulin-sensitive tissues. Plays an important role in signaling in response to FGFR1, FGFR2, FGFR3, FGFR4, KITLG/SCF, KIT, PDGFRA and PDGFRB. Likewise, plays a role in ITGB2 signaling (PubMed:<a href="http://www.uniprot.org/citations/17626883" target="\_blank">17626883</a>, PubMed:<a href="http://www.uniprot.org/citations/19805105" target="\_blank">19805105</a>, PubMed:<a href="http://www.uniprot.org/citations/7518429" target="\_blank">7518429</a>). Modulates the cellular response to ER stress by promoting nuclear translocation of XBP1 isoform 2 in a ER stress- and/or insulin-dependent manner during metabolic overloading in the liver and hence plays a role in glucose tolerance improvement (PubMed:<a href="http://www.uniprot.org/citations/20348923" target="\_blank">20348923</a>).

#### Tissue Location

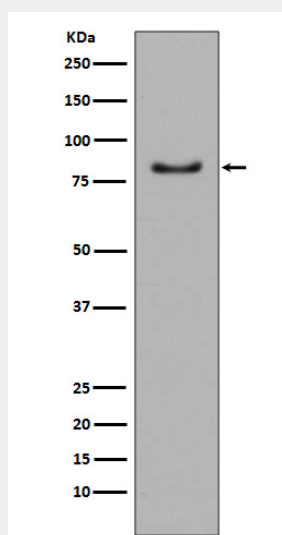
Isoform 2 is expressed in skeletal muscle and brain, and at lower levels in kidney and cardiac muscle. Isoform 2 and isoform 4 are present in skeletal muscle (at protein level)

### PI 3 Kinase p85 alpha Antibody - Protocols

Provided below are standard protocols that you may find useful for product applications.

- [Western Blot](#)
- [Blocking Peptides](#)
- [Dot Blot](#)
- [Immunohistochemistry](#)
- [Immunofluorescence](#)
- [Immunoprecipitation](#)
- [Flow Cytometry](#)
- [Cell Culture](#)

### PI 3 Kinase p85 alpha Antibody - Images



Western blot analysis of PI 3 Kinase p85 alpha expression in A431 cell lysate.